



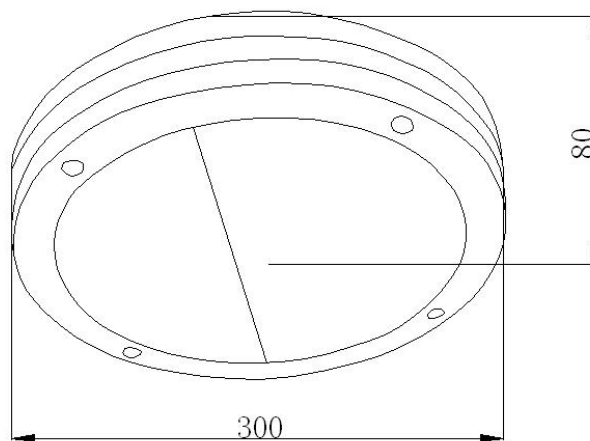
LED Ceiling Light Specification

1、 Model No: PT20W-300PC-A

2、 Product Picture:



3、 Product Size:





4、Product Parameters:

4.1、Electricity Parameters:

NO	Items	Parameters
1	Input Voltage	90-265V 42-63HZ
2	Input Current	0.114A (230V)
3	Power	20W
4	Output Voltage	30V
5	Output Current	0.67A
6	Power Factor	>0.9PF
7	Luminous Efficiency	≥85%

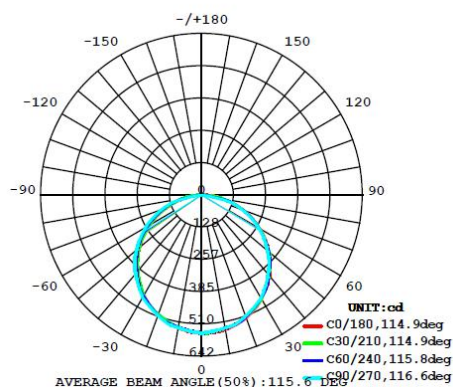
4.2、Optical Parameters:

NO	Items	Parameters
1	Beam angel (H, V)	115°
2	Peak Light Intensity	514cd
3	Luminous Flux	1600Lm
4	Color Rendering Index	≥75Ra
5	Color Temperature	2800-3200k /4000-4500k/5500-6000k

4.3、Physical Parameters:



NO	Items	Parameters
1	Working temperature	-40° — 60°
2	IP range	IP65
3	N. W	1.82Kg
4	Length	300mm
5	Width	300mm
6	Height	80mm

5、Light Intensity Distribution Curve:



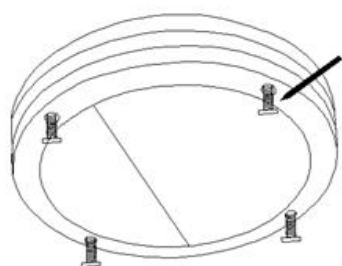


6、Packing:

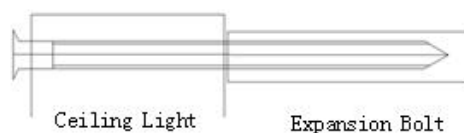
No	part	size	parameter	picture
1	Inner Packing	Box Size	310*310*110mm	
		Weight	2.03Kg	
2	Outer packing (5/case)	Box Size	495*315*315mm	
		Total weight	10.95Kg	

7. Attentions:

- 7.1、Take 4pcs 5*40mm screw to fix the lamp to the wall, take 4pcs 5*40mm screw to fix the lamp base and lamp cover.
- 7.2、Installation methods : with the tapping screws installed two holes of base to specified location(two holes are on the diagonal of base).
- 7.3、when fix the lamp body, drill a hole with 6mm-7mm on the wall, hammer into the expansion bolt. Screw through the screw hole of lamp body , screw in the expansion bolt . installation over . see the picture :

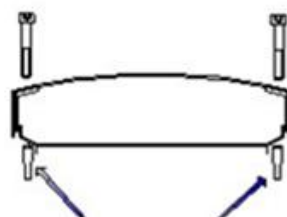


Fixing the lamp body and the lampshade screw



Ceiling Light

Expansion Bolt



Expansion Bolt